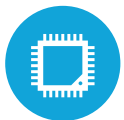




HIGHLIGHTS



3 OS Options Available



11.6" Projected Capacitive LED LCD



Electronic lock secures the tablet as soon as it is installed on the base



All in one that converts to a Tablet with the push of a button



Peripheral Options include MSR, Fingerprint Reader, RFID & Rear Camera

SPECIFICATIONS

MOTHERBOARD

Intel™ Elkhart Lake Celeron™ J6412 up to 2.6 Ghz
System Memory: 8 GB RAM
Graphics: Intel HD Graphics

LCD DISPLAY

LCD: 11.6"
Maximum Resolution: 1920x1080
Brightness: 300 nits
Backlight Technology: LED
Aspect Ratio: 16:9
Touch: True Flat Projected Capacitive Multi-Touch

STORAGE

Solid State Drive: 128 GB eMMC

I/O PORTS IN BASE

USB: 1x USB 3.0 (type-C data transfer only, no charge)
*Powered USB: 1x12V, 1x24V (Must upgrade to 180W
Power Supply to utilize Powered USB)
Serial: 2x DB9 (power option 0, 5V, 12V)
LAN : 1xRJ45 (10x100Mbps)
Cash Drawer: 1xRJ11
DC Jack: 1x 4-pin Locking

POWER

Power Adapter: 120W/19V (Tablet charging through stand)
*To use Powered USB, must upgrade to 180W
Battery: 3.8 V 7000mAh

COMMUNICATION

Intel Wireless: 802.11 a/b/g/ac/ax 5.2

CONTROL

Sensor: G-Sensor

AUDIO

Microphone: Integrated
Speakers: 1x1W

OPTIONAL PERIPHERALS

MSR: ID Tech 3-Track MSR
Fingerprint Reader: HID Global Capacitive Reader (TCET Module)
RFID: HID Global RFID Reader
Rear Camera: 2 Megapixel
Barcode Reader: Integrated 2D Barcode Reader, Honeywell 3601

CERTIFICATE

EMC & Safety: FCC Class B, CE Mark Class B, LVD, RF

ENVIRONMENT

Operating & Storage Temperature: 0°C ~ 104°F (Discharged)
32°F ~ 95°F (Charging)
Operating & Storage Humidity: 20% ~ 80% RH non-condensing

OS SUPPORT

Windows 10 IOT, Windows 11, Android13,*Linux (*Inquire about availability)



KEY FEATURES	
1	11.6" LED LCD with Projected Capacitive Touch
2	Push of a button to release tablet from base
3	Electronic lock holds the tablet in place
4	ID Tech MSR
5	2D Barcode scanner
6	Next generation technology